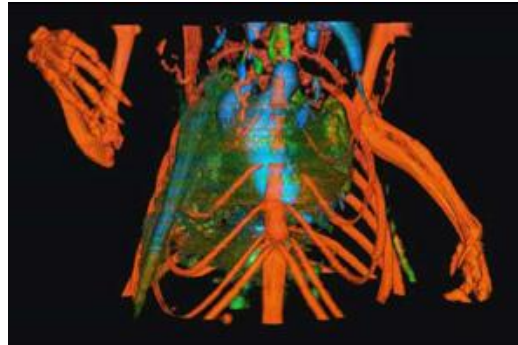


KROMEK ANNOUNCES MARS BIOIMAGING AGREEMENT

Anglo-US technology pioneer, Kromek Ltd, has announced it has signed an exclusive, worldwide technology partnership, distribution and support agreement with New Zealand-based, MARS Bioimaging Ltd (MBI). The agreement covers the Medipix3 ASIC-based detector system used in the MARS-CT scanner, which has been developed for pre-clinical imaging applications. Kromek will distribute and support the MARS CT scanners.



In an exciting development, Kromek will provide the technology and know-how to incorporate solid-state CZT sensors with the photon processing Medipix3 chip. This will create a unique spectral CT capability for use in medical applications to enable high energy, high flux, spectral, photon counting for the MARS-CT system.

Kromek chief executive, Dr Arnab Basu explains: “This agreement is an exciting development for Kromek; it combines the respective strengths of both companies, there are clear synergies we are able to exploit both in market opportunities and technology as well as potential joint research and development projects for spectral CT imaging within the medical sector.”

Commenting on the relationship, MBI chief executive, Professor Philip Butler explained: “We are delighted that this agreement provides us with a great opportunity to promote the MARS-CT scanner, which is the first commercially available spectral, high-definition, computed tomography system. It has already demonstrated exciting potential applications. With this partnership we will be able to reach more customers and ensure they have world-class support. I look forward to working with Arnab and his team on a major technical collaboration.”



Kromek currently works on a number of large international programmes both with national governments and other major research institutions; including collaborative programmes with the University of Massachusetts Medical School (UMASS), to develop an advanced system for breast cancer detection and diagnosis, and with the Institute of Cancer Research at the Royal Marsden Hospital in London.

MBI designs and manufactures spectral CT scanners based on the Medipix3 ASIC. Currently they have

systems installed at leading research institutes in the United States, Europe, and New Zealand.

The Medipix3 ASIC is an outgrowth of the particle detectors developed for the Large Hadron Collider at CERN (the European Organisation for Nuclear Research). For the past two decades the international Medipix collaborations have been working to tailor this cutting edge physics technology for variety of major market sectors.